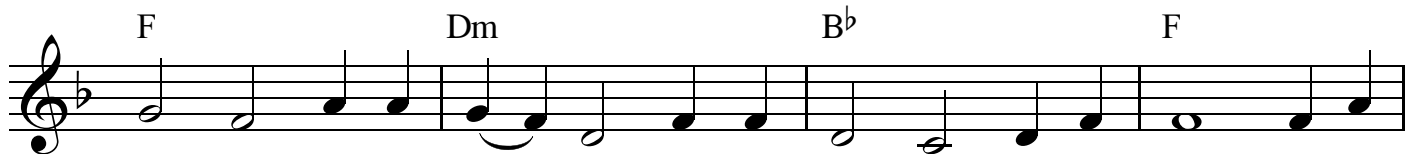


As A Fire Is Meant For Burning

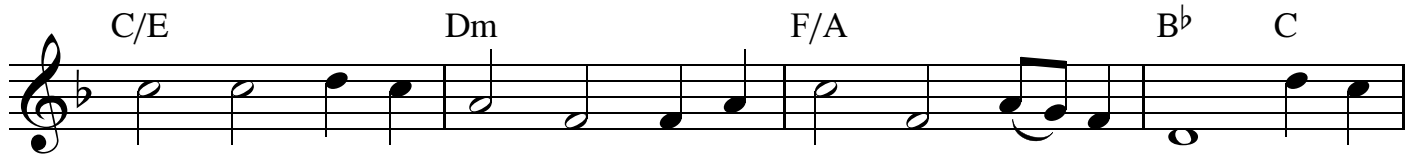
Text: Ruth Duck
Tune: Beach Spring



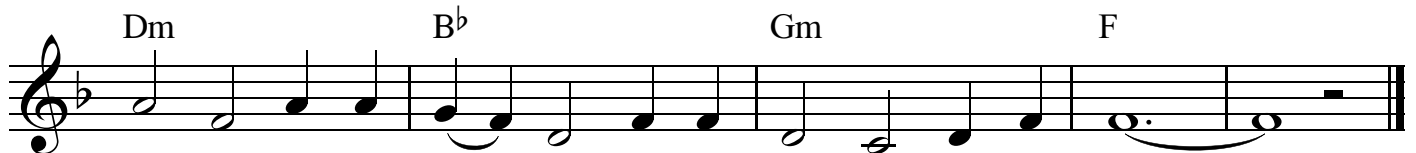
1. As a fire is meant for burn - ing With a bright and warm-ing flame, so the
2. We are learn - ers; we are teach - ers; we are pil - grims on the way. We are
3. As a green bud in the spring - time is a sign of life re-newed, so may



church is meant for mis - sion, giv - ing glo - ry to God's name. Not to
seek - ers; we are giv - ers; we are ves - sels made of clay. By our
we be signs of one - ness 'mid earth's peo - ples, man - y hues. As a



preach our creeds or cust - oms, but to build a bridge of care, we join
gen - tle, lov - ing ac - tions, we would show that Christ is light. In a
rain - bow lights the heav - ens when a storm is past and gone, may our



hands a - cross the na - tions, find - ing neigh - bors ev - 'ry - where.____
hum - ble, list - 'ning Spir - it, we would live to God's de - light.____
lives re - flect the ra - diancance of God's new and glor - ious dawn.____